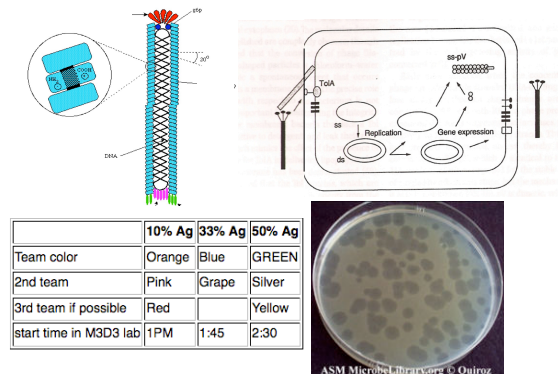


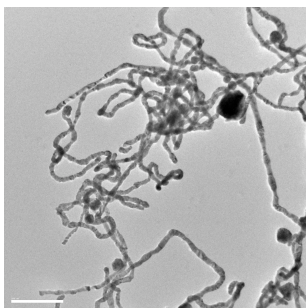
Biomaterials Engineering

M3D4
11.30.10

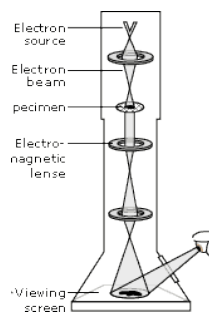
A module in pictures...



TEM



Grape + Blue teams, 20.109(F10)



Making your Gold Nanowire Electrode

70% Au NW: 25% Carbon ("SuperP"): 5% Teflon (PTFE)



7.0 mg Au NWs
Grind 5'

___ mg Super P
Grind 20'

___ mg PTFE
Roll and cut

weigh and dry

